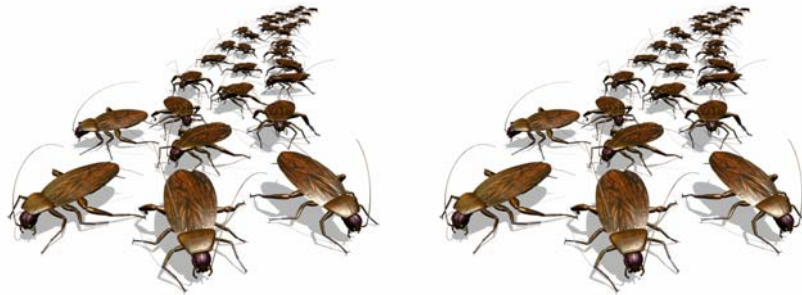


# Roach Checklist

You do need to know that roaches are a transported insect. You can reintroduce them into your home in different ways. They can be brought in, in bags, boxes, or by people not knowing they have them on themselves.

The American cockroach is the largest of the house-infesting roaches. Other common roaches are the brown-banded, German, smokey brown and Oriental cockroach. They can be transported into homes and apartments in boxes and papers, inside furniture and even in non-protected containers from food-handling establishments. Roaches can foul food, damage wallpaper, books and clothing, and produce an unpleasant odor. Some home owners are allergic to roaches, and the pests can contaminate food with certain bacterial diseases that result in food poisoning, dysentery, or diarrhea. Cockroaches can cause childhood asthma.



1. Do not use any other means of control, ( bug bombs, aerosols, etc. ) before or after our treatment as this could hamper the out come.
2. Please remove all items ( silverware, dishes, pots and pans, open food, etc. ) from your cabinets. Please check them as you put them in plastic bags that you are not transferring any roaches to the bag. This would just re-infestate you after unpacking things back to the cabinets. Remove these items from the kitchen area for better work space for the technician.
3. Leave the small appliances ( toasters, microwaves, coffee makers, etc. ) on your counter. They need to be inspected and treated if necessary.
4. In the bathrooms, put away toothbrushes, water glasses, personal items, remove items from under sink unit. Once again place items in plastic bags after checking not to transfer any roaches to the bag.
5. Please have all children and pets toys put away. All pets food and water dishes removed from area and stored in plastic bags.
6. In summer leave air conditioner on or open windows and have a fan running for better ventilation.
7. You will need to thoroughly clean all counters after treatment is done.
8. We strongly recommend follow-up service to be scheduled 15 days from your initial treatment then monthly depending on out come. Please be patient, this process could take from 3 weeks to several months to eliminate a cockroach infestation.